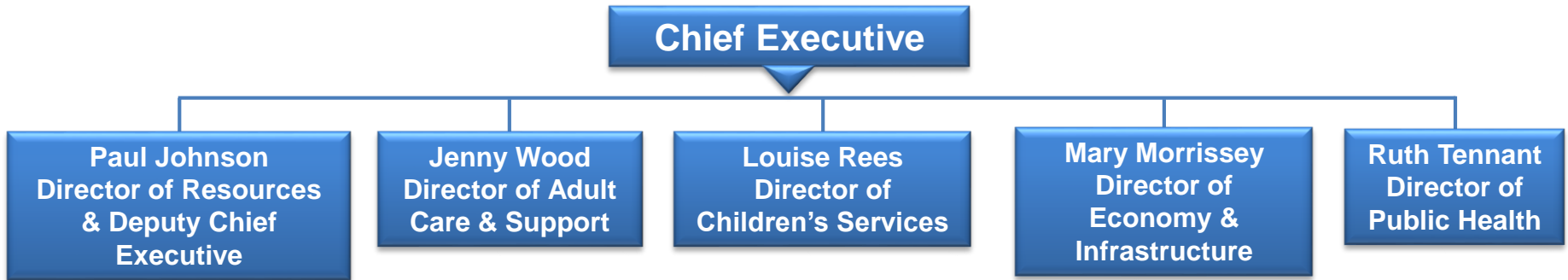


Corporate Leadership Team

April 2021

Corporate Leadership Team

The Corporate Leadership Team (CLT) is made up of the Council's Directors who undertake the strategic decision-making for the organisation



Title	Name	E-mail Address	Telephone
Chief Executive	Nick Page	npage@solihull.gov.uk	(0121) 704 6018
Director of Resources & Deputy Chief Executive	Paul Johnson	pjohnson@solihull.gov.uk	(0121) 704 6194
Director of Adult Care & Support	Jenny Wood	jenny.wood@solihull.gov.uk	(0121) 704 6317
Director of Children's Services	Louise Rees	louise.rees@solihull.gov.uk	(0121) 704 6734
Director of Economy & Infrastructure	Mary Morrissey	mary.morrissey@solihull.gov.uk	(0121) 704 6364
Director of Public Health	Ruth Tennant	ruth.tennant@solihull.gov.uk	(0121) 704 6187

Corporate Leadership Team and Functional Chart

Chief Executive : Nick Page

Paul Johnson Director of Resources & Deputy Chief Executive	Jenny Wood Director of Adult Care & Support	Louise Rees Director of Children's Services	Mary Morrissey Director of Economy & Infrastructure	Ruth Tennant Director of Public Health
Finance and Property Corporate Finance Financial Services Financial Operations Property Services Catering Procurement Income & Awards Strategic Land Human Resources Business Intelligence and Improvement ICT and Information Governance Communications & Marketing Legal & Democratic Services Solicitor to the Council Internal Audit	Adult Care & Support - Commissioning Strategy and Planning Markets, Performance and Quality Adult Care & Support - Operations Provider Services Mental Health & Hospitals Assessment and Support Planning (and Review) Early Intervention and Safeguarding	Children, Young People & Families Child Protection and Family Support Youth Offending Services Looked After Children and Adoption Safeguards Safeguarding and Quality Assurance Learning Education Improvement and Early Years 0-25 SEND Access and Development	Growth & Development Growth Programmes ((UKC Programme/Funding and Commercialisation) Planning, Design & Engagement Economic Development Transport & Infrastructure Highways & Environment Highway Services Environmental Services (Waste & Recycling, Public Realm) Neighbourhood Delivery Stronger Communities Regulatory and Enforcement Services (Food & Safety, Licensing, Trading Standards) Customer Services Libraries, Arts & Information Homelessness & Rough Sleepers SCH Housing Client Function VCS Partnerships Community Development	Health and Wellbeing 0-19 Healthy Child Programme Substance misuse Sexual health Mental health NHS Healthchecks Domestic Violence and abuse Emergency Prevention, Planning and Response Health Protection Leisure Services Solihull Active Employment & Skills Inclusive Growth Health needs assessment, strategy and intelligence

Nick Page

Chief Executive

E: npage@solihull.gov.uk

T: (0121) 704 6018

Responsible for:

- Leading and taking responsibility for the work of the paid staff of the Council.
- Working closely with elected members to deliver:
 - Leadership - working with elected members to ensure strong and visible leadership and direction, encouraging and enabling managers to motivate and inspire their teams.
 - Strategic Direction - ensuring all staff understand and adhere to the strategic aims of the Council and follow the direction set by the elected members.
 - Policy Advice - acting as the principal policy adviser to the elected members of the Council to lead the development of workable strategies which will deliver their political objectives.
 - Partnerships – supporting the leadership and development of strong local and regional partnership working to achieve improved outcomes and better public services for local people.
 - Operational Management - overseeing financial and performance management, risk management, people management and change management within the Council.



Paul Johnson

Director of Resources and Deputy Chief Executive

E: pjohnson@solihull.gov.uk

T: (0121) 704 6194

Responsible for:

- All Corporate Services of the Council.
- Undertaking the Chief Executive's duties in his absence.
- As the Council's nominated Section 151 Officer, has statutory responsibility for ensuring the financial health and probity of the Local Authority.
- Leading the Council's strategic approach to:
 - Financial planning and management.
 - Council Tax and Business Rates collection and benefits administration.
 - Facilities and Asset management.
 - Strategic Land projects.
 - Human Resources.
 - Information & Communications Technology.
- Leading on the Council's 'Smarter Ways of Working Programme'.
- Democratic Services (including Monitoring Officer responsibility).
- Legal Services.
- Equality and Diversity.
- Corporate Performance.
- Policy and Information.
- Organisational and Workforce Development.
- Corporate Procurement.
- Audit, including Health & Safety.
- Communications.
- Business Intelligence and Improvement.
- Financial responsibilities for Solihull Community Housing.



Jenny Wood

Director for Adult Care & Support

E: jenny.wood@solihull.gov.uk

T: (0121) 704 6317

Responsible for:

- The responsibilities of the statutory role of Director of Adult Social Services.
- Assessing local needs and ensuring availability and delivery of a full range of adult social services, including regulated services
- Overseeing financial and performance management, risk management, people management and change management for the Adult Care and Support Directorate
- Leading an appropriate Council and multi-agency response to safeguarding adults.
- Commissioning and quality, including market oversight
- Professional leadership, including workforce planning
- Promoting social inclusion and wellbeing
- With health partners, establish integrated whole systems approach to supporting communities with strong partnership working
- Paediatric and Adult Occupational Therapy Services



Louise Rees

Director of Children's Services

E: louise.rees@solihull.gov.uk

T: (0121) 704 6734

Responsible for:

- The statutory role of Director of Children's Services.
- Safeguarding and promoting the welfare of children within the Borough.
- Promoting the upbringing of such children by their families.
- Ensuring the provision of a range and level of services appropriate to the family's needs, including education.
- Undertaking the functions of the Council as Head of the Adoption Agency.



Mary Morrissey

Director of Economy & Infrastructure

E: mary.morrissey@solihull.gov.uk

T: (0121) 704 6364

Responsible for all services associated with:

- Place shaping
- Managing the environment
- Public Realm and Waste and Recycling
- Regulatory and Enforcement services
- Transport and Highways
- Regeneration
- Promoting the economy and sustainable growth, and development in the Borough
- UK Central Programme
- Community-related services
- Libraries, Information and Arts Services
- Customer Services
- Community and Voluntary Sector Relations
- Solihull Partnership and Homelessness



Ruth Tennant

Director of Public Health

E: ruth.tennant@solihull.gov.uk

T: (0121) 704 6187

Responsible for:

- Statutory role of Director of Public Health.
- Public Health adviser to the Council, Health & Well-being Board and ICS.
- Oversight of quality and outcomes of public health commissioned services
- Oversight of health inequalities and health needs locally
- Improving wider determinants of health
- Leisure services and physical activity
- Skills and employment
- Health protection, including emergency prevention, planning and resilience.
- Partnership and management with NHS and other key partners to improve health and well-being and protect health
- Public Health workforce development and training.

